



Cereatech

Cereatech Inc.,
www.cereatech.com
Phone : +1 608 960 6427
Email : info@cereatech.com

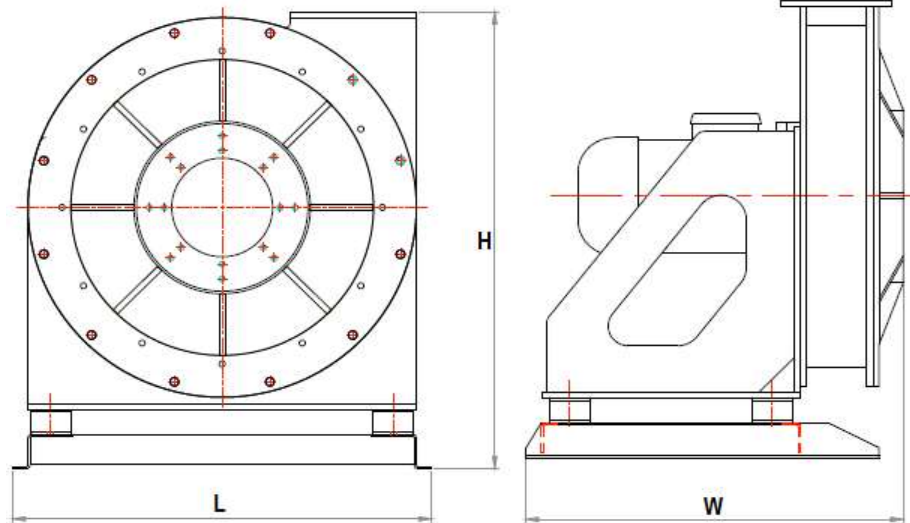


MILLING MACHINES & EQUIPMENT

MILLING MACHINES & EQUIPMENT

PNEUMATIC IN-LINE INSECT LARVA DESTRUCTION MACHINE

MODEL : IDE-P



Designed specifically for killing insects, eggs or larvae present in the flour by a violent impact of the machine. They extend the storage of the materials for longer

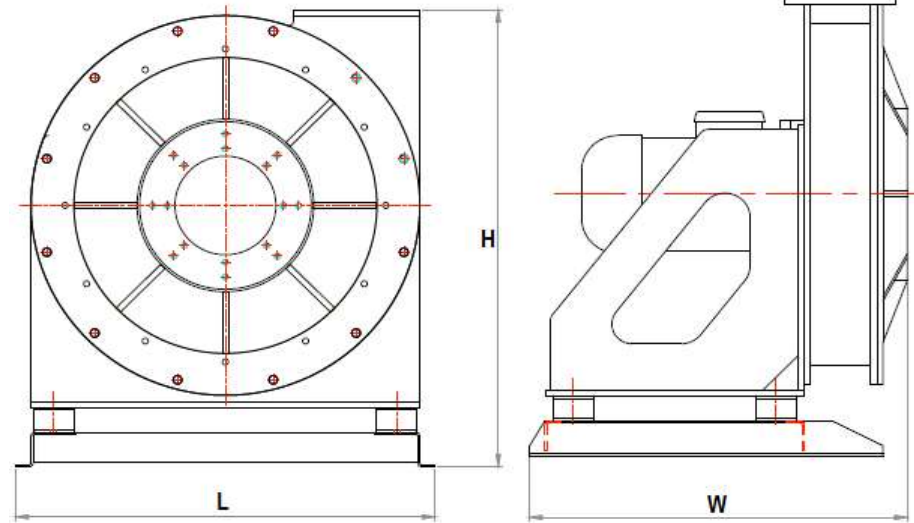
MODEL	IDE-P 5			IDE-P 10		IDE-P 15						
Capacity (t/h)	0-2	3	4-5	6-8	9-11	12-15	16-18	19-22	23-27	27-30	31-35	36-40
Power (kW)	5,5	7,5	11	15	18,5	22	30	37	45	55	75	90
W (mm)	940			992		1145						
H (mm)	1145			1165		1165						
L (mm)	770			770		770						
Weight (kg)	400-500					500-650						

*The above shown capacities are for wheat, maize flour

*The motor powers calculated for 50 Hz

PNEUMATIC IN-LINE INSECT LARVA DESTRUCTION MACHINE

MODEL : IDE-P-SS



STAINLESS STEEL VERSION

- * corrosion resistance,
- * hygienic,
- * durable,
- * needs low maintenance

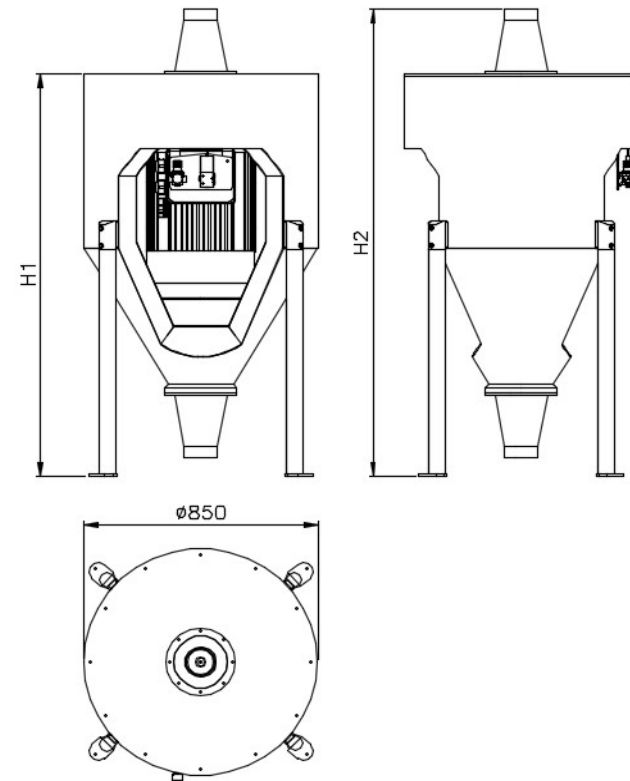
MODEL	IDE-P 5			IDE-P 10		IDE-P 15						
Capacity (t/h)	0-2	3	4-5	6-8	9-11	12-15	16-18	19-22	23-27	27-30	31-35	36-40
Power (kW)	5,5	7,5	11	15	18,5	22	30	37	45	55	75	90
W (mm)	940			992		1145					1170	
H (mm)	1145			1165		1165						
L (mm)	770			770		770						
Weight (kg)	400-500					500-650						

*The above shown capacities are for wheat, maize flour

*The motor powers calculated for 50 Hz

FREE FALL INSECT LARVA DESTRUCTION MACHINE

MODEL : IDE-S



Designed specifically for killing insects, eggs or larvae present in the flour by a violent impact of the machine. They extends the storage of the materials for longer periods.

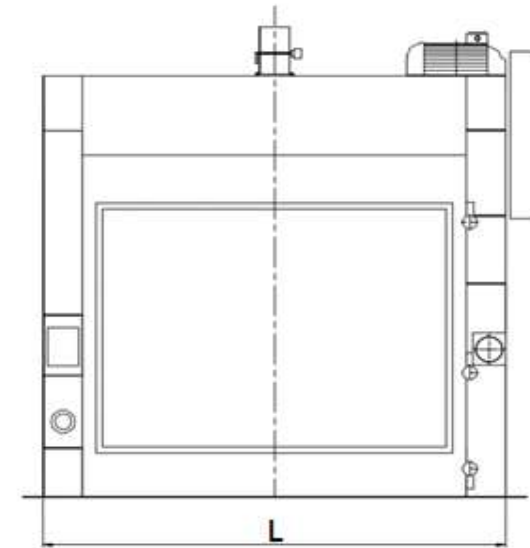
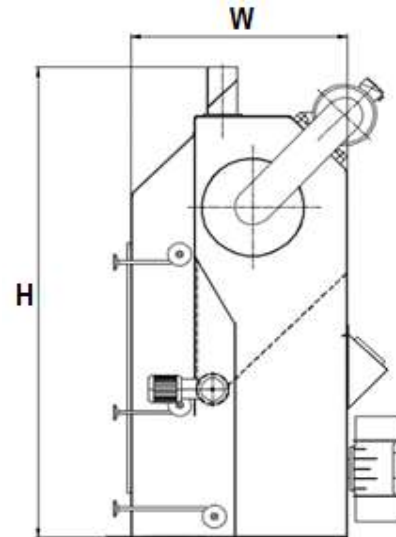
MODEL	IDE-S 5			IDE-S 10		IDE-S 15		
Capacity (t/h)	0-2	3	4--5	6--8	9--11	12--15	16--18	19-22
Power (kW)	5,5	7,5	11	15	18,5	22	30	37
H1 (mm)	1500							
H2 (mm)	1740							
Weight (kg)	400-600							

*The above shown capacities are for wheat, maize flour

*The motor powers calculated for 50 Hz

AIR CIRCULATING ASPIRATOR

MODEL : TE



Designed to separate dust, light purities, broken kernels and etc. from a grain. The system has an advantage to reuse most of its air without exhausting and without requirement of central or special filter and aspiration system which

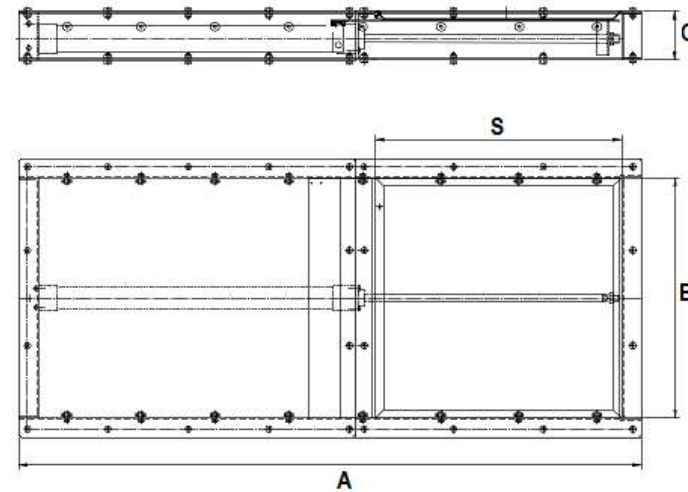
MODEL	TE 60	TE 100	TE 150
Capacity (t/h) for Precleaning	up to 8	8-14	15-24
Capacity (t/h) for Cleaning	up to 30	30-40	41-90
Air requirement (m ³ /min)	6	8	10
Electric motor (kW)	4	4	4
Gear motor (kW)	0,37	0,37	0,55
W (mm)	947		
H (mm)	1995		
L (mm)	920	1320	1820
Weight (kg)	500	650	860

*The above shown capacities are calculated for wheat

*The motor powers calculated for 50 Hz

PNEUMATIC / MANUAL OPERATED SLIDING GATE

MODEL : SK

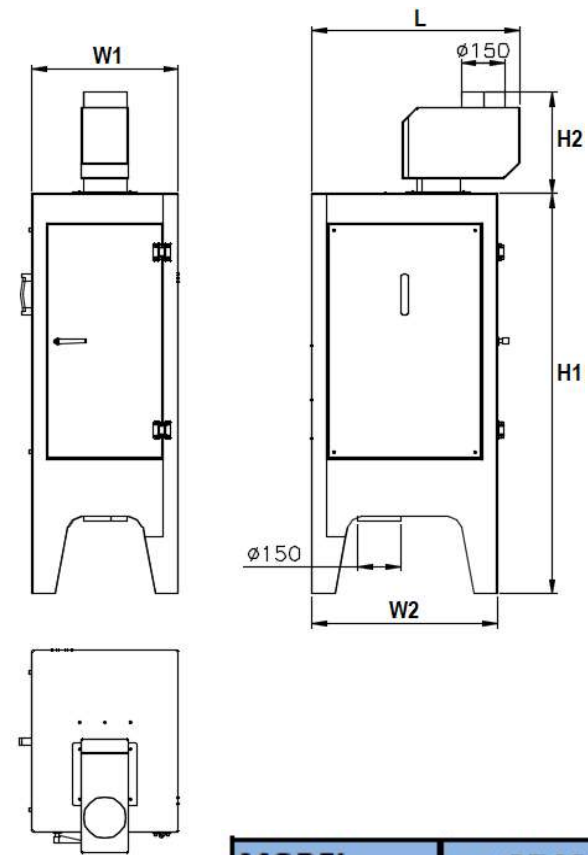


Designed to discharge or interrupt the flow of free flowing material, used widely for many applications in food processing systems, grain handling terminals, grain storage, powder and granule particle handling systems.

MODEL	SK 170	SK 200	SK 220	SK 270	SK 320	SK 350	SK 400
A (mm)	515	615	645	745	845	945	980
B (mm)	250	280	300	350	400	450	480
C (mm)	90						100
S (mm)	170x170	200x200	220x220	270x270	320x320	350x350	400x400
Weight (kg)	20	25	27	31	33	50	65

AUTOMATIC DAMPENING SYSTEM

MODEL : OT



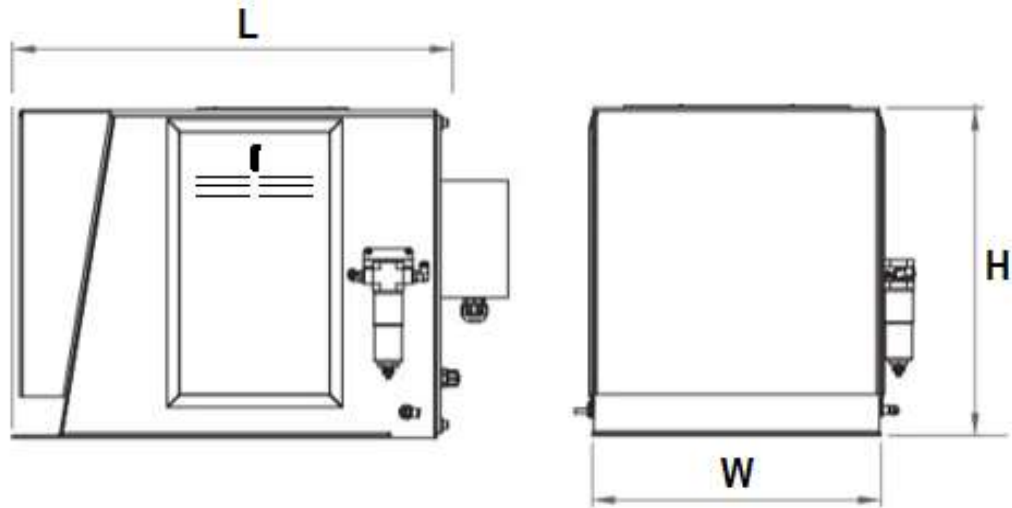
To measure required humidity, actual humidity, specific weight, throughput capacity of grain, product temperature of grain, flowrate of water for grain dampening such as durum wheat, maize, spelt (corn) and others on request and automatically controls of the required humidity (amount of added water).



MODEL	OT 25
H1 (mm)	360
H2 (mm)	1413
W1 (mm)	506
W2 (mm)	716
L (mm)	642

AUTOMATIC FLOW REGULATOR

MODEL : AD

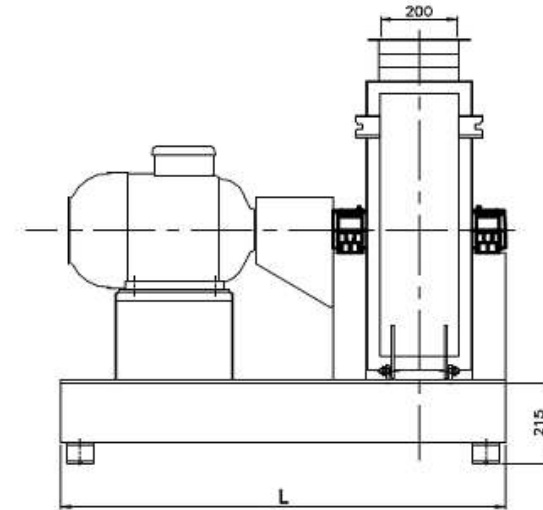
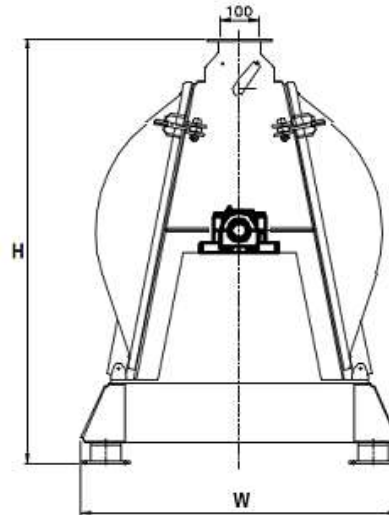


MODEL	FR 25
Capacity (t/h) wheat	1 - 25
W (mm)	515
H (mm)	450
L (mm)	610
Weight (kg)	70

Automatic flow regulators are used to measure precisely the weight of cereals during the flow. The system is installed by a load cell and an inclined beating plate. The measurement is made by a PLC programme. They have been developed to provide for successful blending of grain in a certain rate to increase the production and production productivity. The blending can be measured, recorded and reported during the process. They can be either connected to automation systems of the flour mills or used manual.

HAMMER MILL

MODEL : HM



Used for grinding to reduce particle sizes. Good for flour mills for screenings grinding, feed mills for feed grinding and expeller cakes, oil mills for extraction of meal, expeller cakes, dehauling (peeling) plants for oat hulls and damaged (broken) rice.

MODEL	HM 11	HM 22	HM 30
Capacity (t/h)	1	2	2,5
Air requirement (m ³ /min)	15	40	40
Electric motor (kW)	11	22	30
W (mm)	830	830	830
H (mm)	1138	1138	1138
L (mm)	1180	1480	1480
Weight (kg)	600	730	740

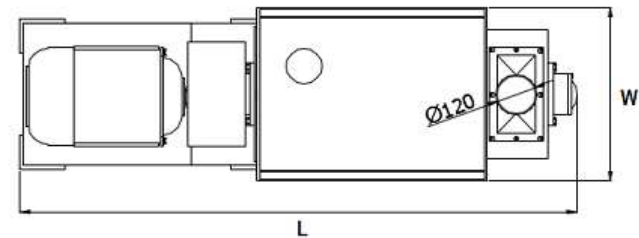
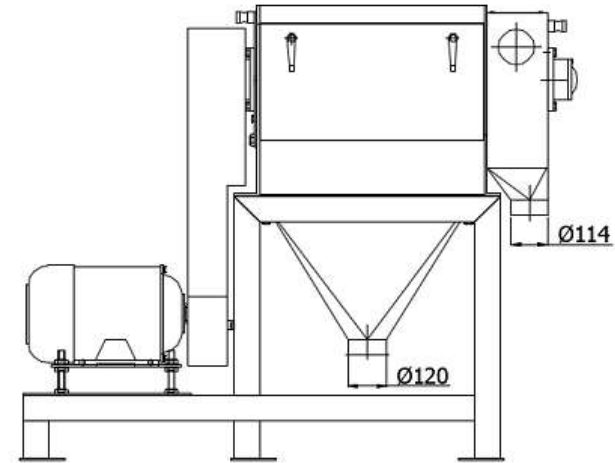
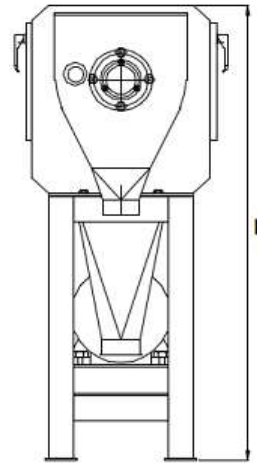
*The above shown capacities are calculated for wheat

*The motor powers calculated for 50 Hz

*For higher capacities please contact with us

SCOURING MACHINE

MODEL : SM



MODEL	SM 30	SC 40	SC 50
Capacity (t/h) 1. Cleaning	8	16	20
Capacity (t/h) 2. Celaning	7,5	15	18
Air requirement (m ³ /min)	8	10	13
Electric motor (kW)	11	15	18,5
W (mm)	550	880	880
H (mm)	1446	1763	1763
L (mm)	1724	1743	1743
Weight (kg)	750	850	900

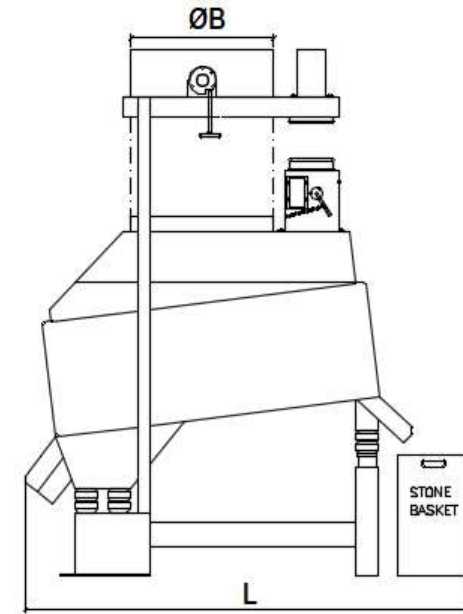
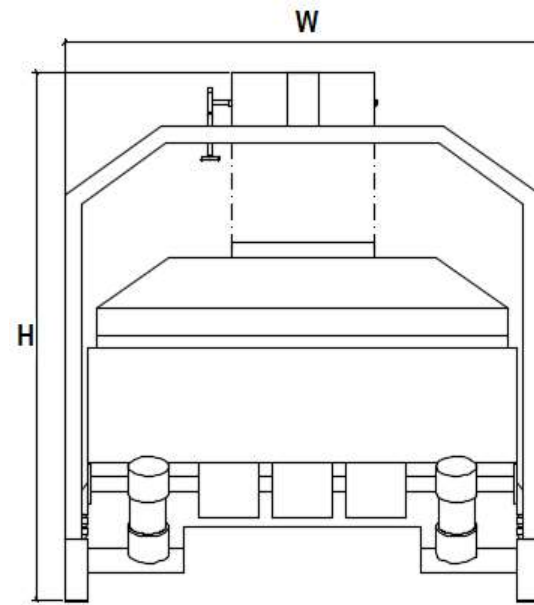
*The above shown capacities are calculated for wheat

*The motor powers calculated for 50 Hz

Those are used for scouring the grain and separate it from dust, soil particles and foreign materials by an impact during operation by a mesh screen.

STONE SEPARATOR

MODEL : TA

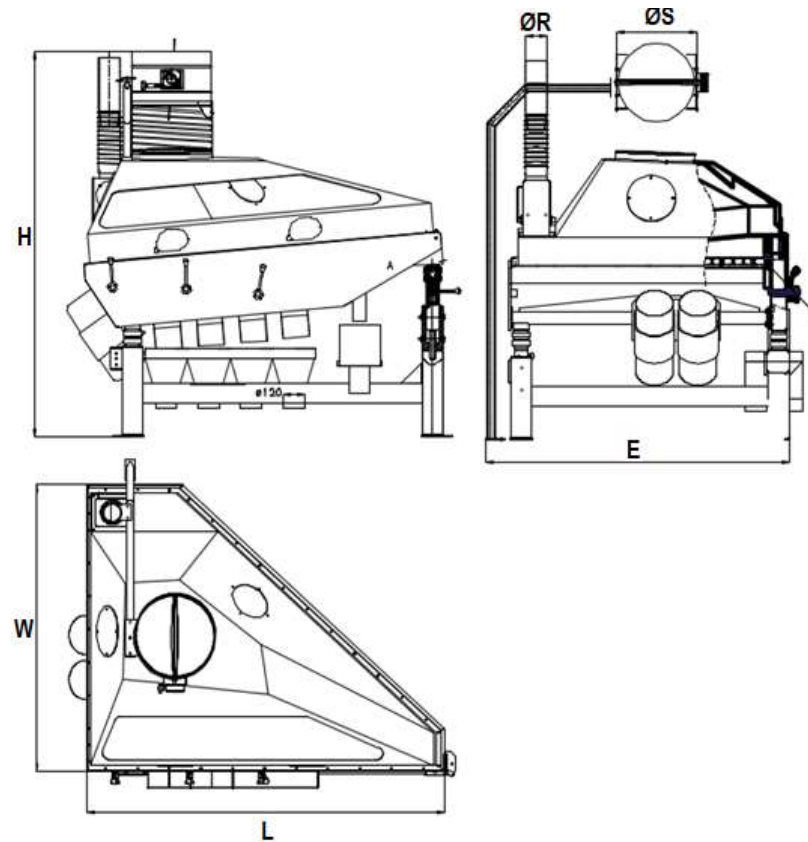
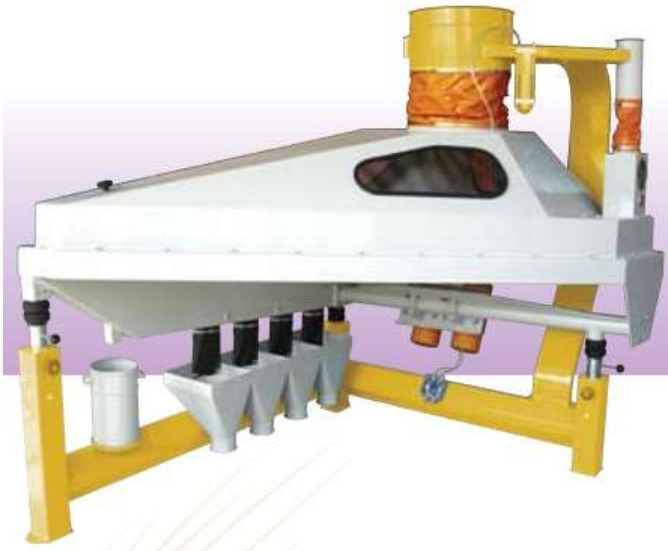


To separate the stones from the grain. Heavy materials are separated from light ones by the difference in the specific gravity of the materials.

MODEL	TA 100	TA 120	TA 180
Capacity (t/h)	8	14	20
Power (kW)	0,35	0,68	1,1
Air requirement (m ³ /min)	8	14	20
W (mm)	1050	1400	2000
L (mm)	1920		
H (mm)	2184		
ØB (mm)	400	500	600
Weight (kg)	550	650	780

GRAVITY SEPARATOR

MODEL : DTE



MODEL	DTE 25	DTE 35
Capacity (t/h) for wheat	0,3-2,5	0,5-3,5
Capacity (t/h) for maize	0,7-2	0,3-3,5
Power (kW)	2x0,55	2x0,55
Air requirement (m ³ /min)	85/120	120/140
W (mm)	1210	1570
H (mm)	1950	2100
L (mm)	1520	1600
ØR (mm)	120	120
ØS (mm)	350	450
Weight (kg)	500	550

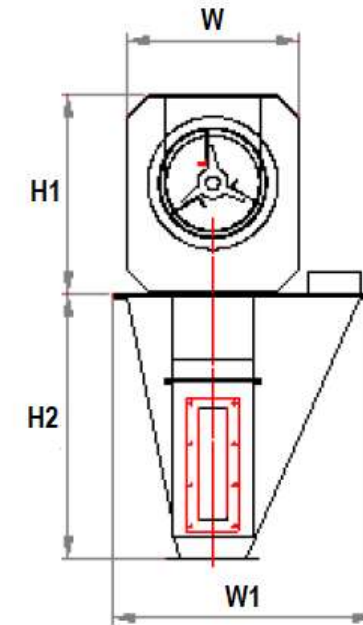
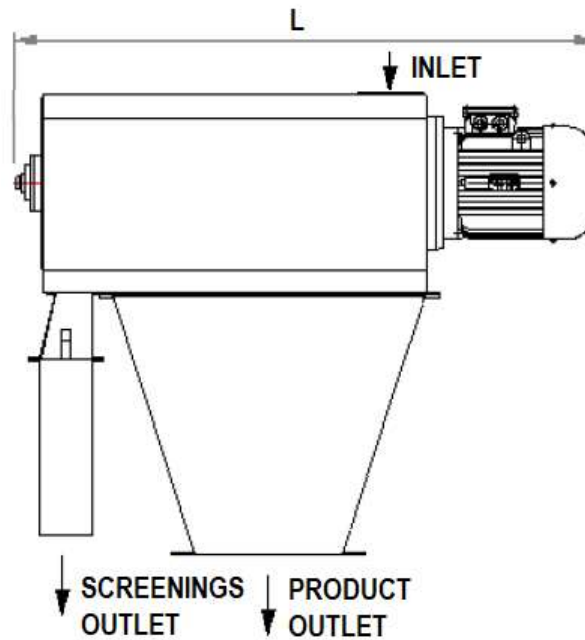
*The above shown capacities are calculated for wheat

*The motor powers calculated for 50 Hz

Good for separating dry, granular, free-flowing material according to their specific gravities. Similar particles can be effectively separated with as little as 0.5 % difference in specific density. They use the combination of air for weighing, vibration for fluidization and table slope for separation.

ROTARY CONTROL SIFTER

MODEL : TE



Primarily for flour redressing prior packaging for the hygienic purposes. The material is conveyed into a cylindrical perforated sieve and then is thrown on the sieve wall with a high speed by means of angular blades

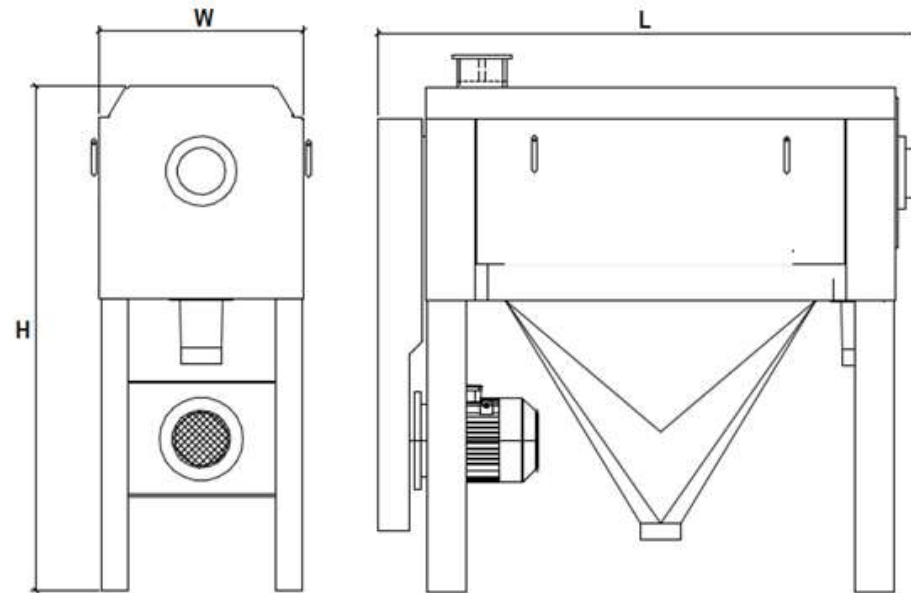
MODEL	TE 25
Capacity (t/h) 2,5 mm screen	22
Capacity (t/h) 3 mm screen	30
Electric motor (kW)	5,5
W (mm)	1055
W1 (mm)	604
H1 (mm)	450
H2 (mm)	605
L (mm)	1344
Weight (kg)	400

*The above shown capacities are calculated for wheat flour

*The motor powers calculated for 50 Hz

BRAN DUSTER

MODEL : KF



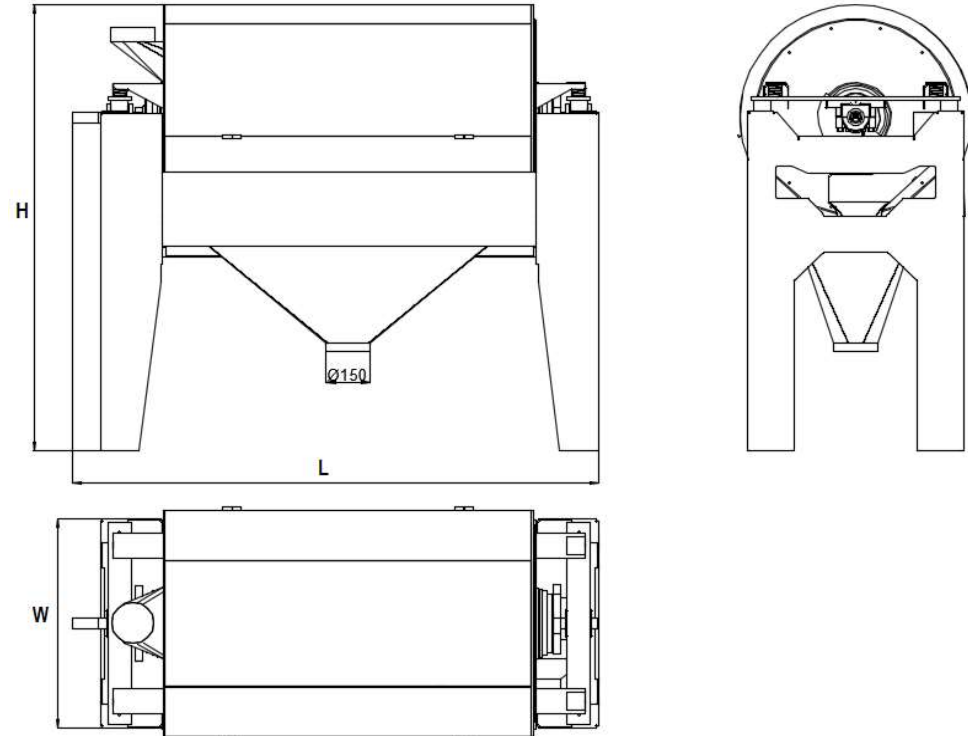
Bran finishers (or Bran dusters) are used to separate the flour sticking on the bran generally after the lower break scalpers of mill streams. Optimum results are obtained by treating the coarse and fine overtails separately.

MODEL	KF 45
Capacity (t/h) Wheat flour	1-1,5
Electric motor (kW)	5,5
W (mm)	620
H (mm)	1542
H1 (mm)	1282
L (mm)	1635
Weight (kg)	450

*The motor powers calculated for 50 Hz

HORIZONTAL VIBRO BRAN DUSTER

MODEL : VKF

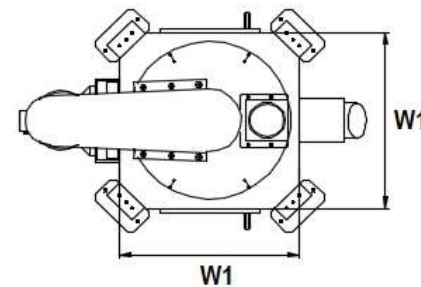
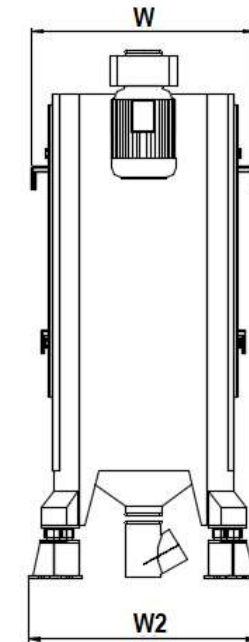
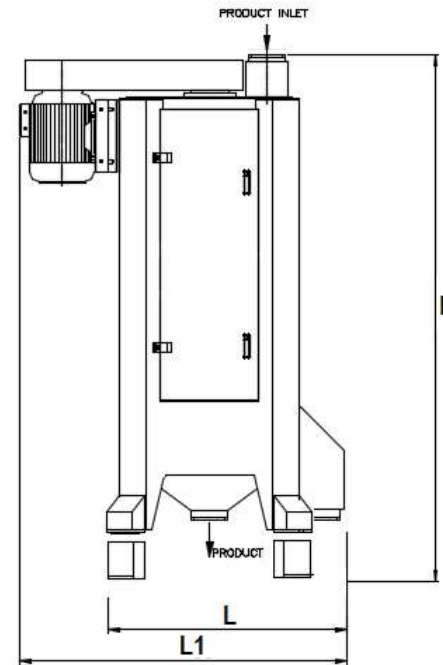


They are good for separating fine particles stuck to flour difficult to sieve by double sifting effect with centrifugal and vibration. Vibrating section of the machine is connected to the main body with vibration absorbers enabling silent operation and preventing the vibration transmission to the floor.

MODEL	VKF 50	VKF 100	VKF 150
Capacity (kg/h) flour	750	1000	1500
Power (kW)	5,5	7,5	11
Air requirement (m ³ /min)	3	4	5
W (mm)	545	675	725
L (mm)	1530	1530	1810
H (mm)	1799	1810	1920
Weight (kg)	450	550	750

VERTICAL VIBRO SIFTER

MODEL : VE

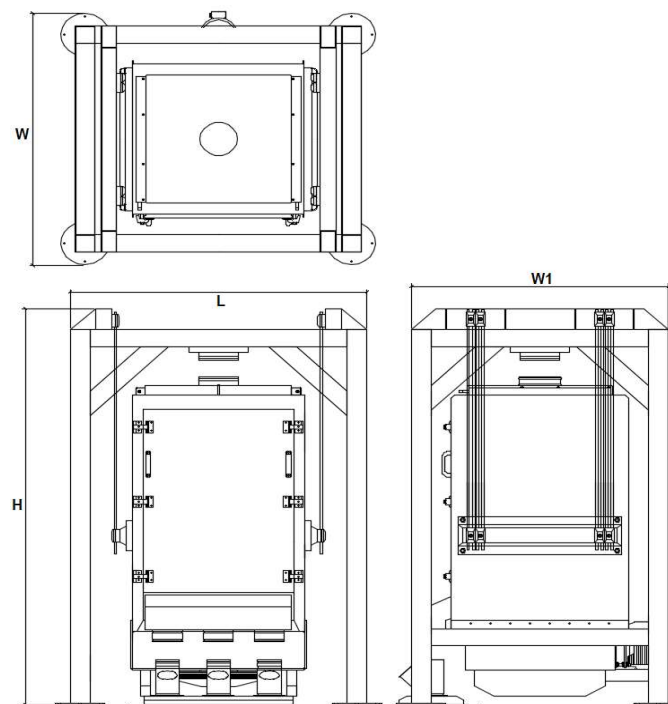


MODEL	FR 25
Capacity (t/h) soft wheat	0,7-0,9
Capacity (t/h) hard wheat	0,9-1,2
Power (kW)	4
W (mm)	740
W1 (mm)	600
W2 (mm)	760
H (mm)	1800
L (mm)	900
L1 (mm)	1150
Weight (kg)	320

Helping to separate sticky flour coming from filters and bran dusters and regain to the system. The principle of work is based on an adjustable eccentric weights, housing makes a vibrating motion. Double side doors can ease the replacement of

FLOUR CONTROL PLANSIFTER

MODEL : KE-S

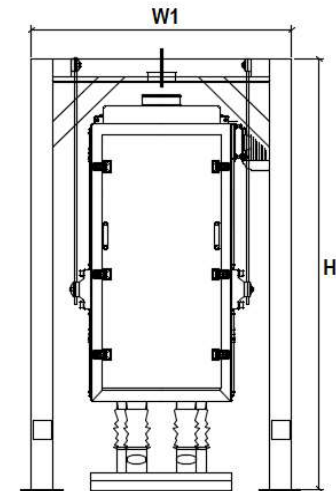
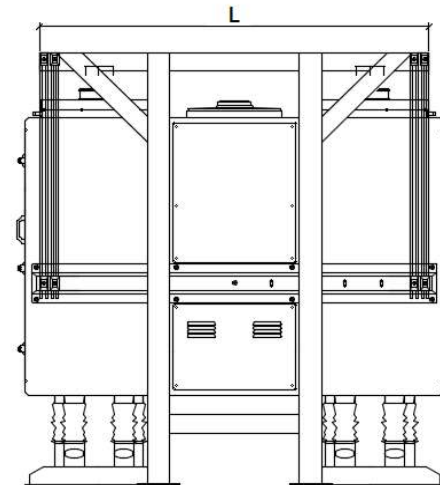
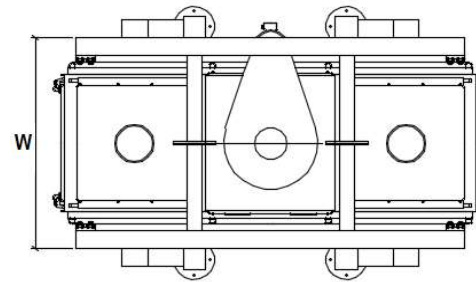


Primarily for flour redressing prior packaging for the hygienic purposes.

MODEL	KE-S 1/8 - 100	KE-S 1/12 - 100	KE-S 1/8 - 74	KE-S 1/12 - 74
Quantity of sifter frame	4-8	8-12	4-8	8-12
Sifter frame size (mm)	1000	1000	740	740
Frame height (mm)	89	119	89	119
Power (kW)	1,1	1,5	1,5	1,5
Stroke diameter (mm)	65	65	65	65
W (mm)	1710	1710	1430	1430
L (mm)	1790	1790	1510	1510
H (mm)	2385	2085	2385	2085
W1 (mm)	1590	1590	1310	1310
Weight (kg)	1100	1400	1000	1100

FLOUR CONTROL PLANSIFTER - TWIN SIFTER

MODEL : KE-D

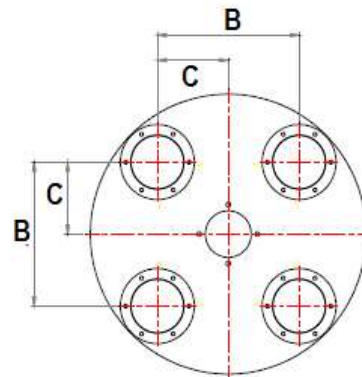
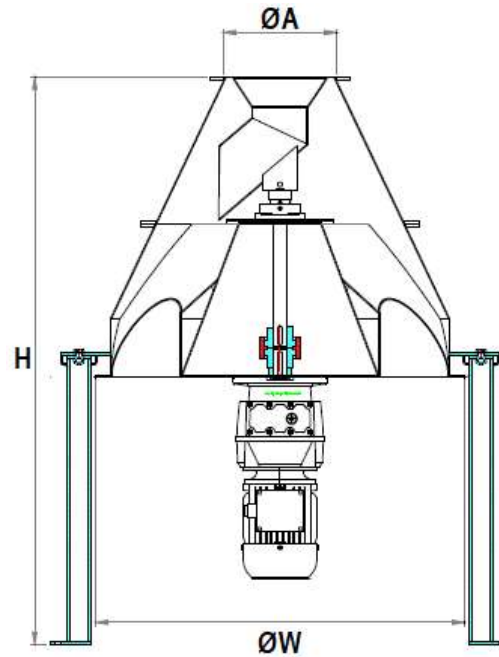


MODEL	KE-D 2/8 - 740	KE-D 2/12 - 740
Quantity of sifter frame	4-8	8-12
Sifter frame size (mm)	740	740
Frame height (mm)	89	119
Power (kW)	1,5	2,2
Stroke diameter (mm)	65	65
W (mm)	1430	1430
L (mm)	1510	1510
H (mm)	2385	2085
W1 (mm)	1310	1310
Weight (kg)	1450	1750

Primarily for flour redressing prior packaging or storage silos for the hygienic purposes.

DISTRIBUTOR

MODEL : UD

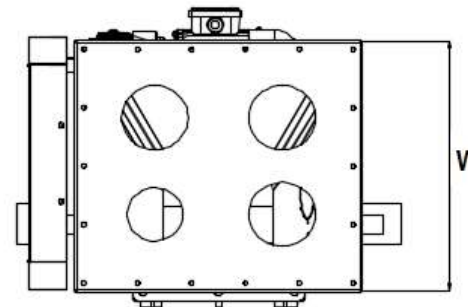
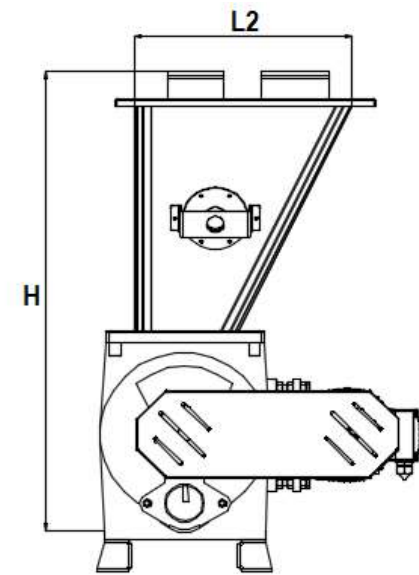
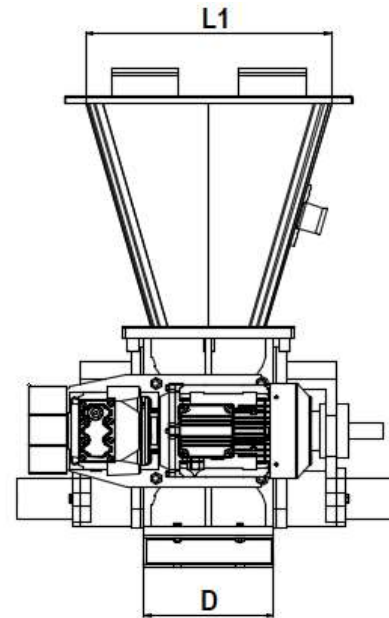


To spread granular or powdered materials into storage silos, bins. Number of outlets can be equal to the quantity of silos, bins

MODEL	UD 4	UD 6	UD 8
Power (kW)	0,55	0,55	0,55
ØW (mm)	784		
H (mm)	1190		
ØA (mm)	240		
ØB (mm)	403		
Weight (kg)	200	200	205

BLOWTHROUGH AIR LOCK

MODEL : EK

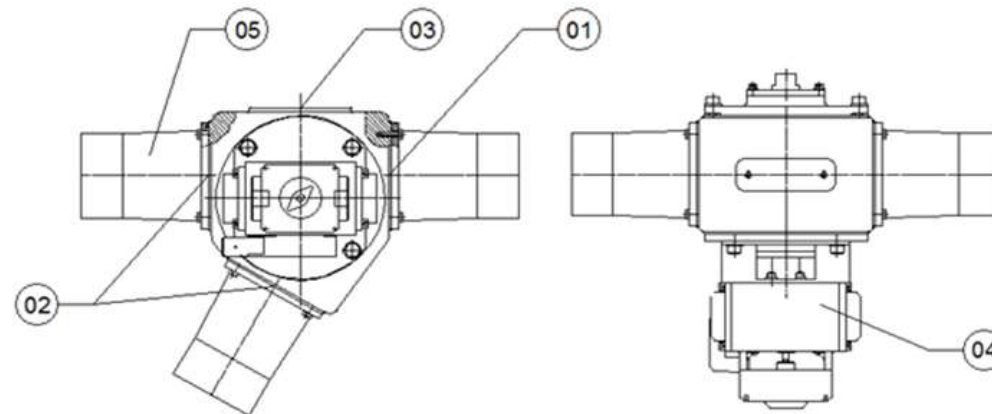
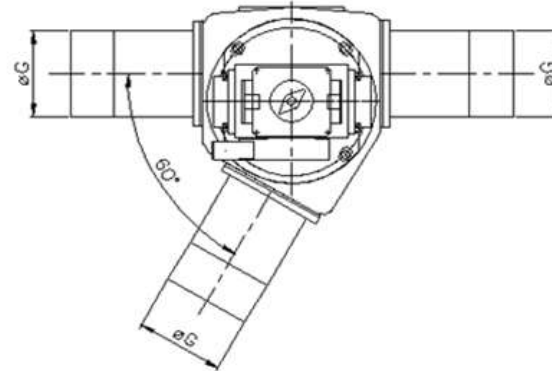


MODEL	EK 200	EK 250	EK 320	EK 450	EK 500
Capacity (t/h) wheat	4	10	20	45	80
Capacity (t/h) flour	2,2	5,5	12,5	2	50
Capacity (t/h) bran	1,5	3	6,5	16	28
W (mm)	438	469	518	694	764
H (mm)	870	937	1088	1108	1290
L1 (mm)	370	450	600	780	800
L2 (mm)	370	400	450	630	700
D (mm)	195	275	300	440	475

Blowthrough air locks are used in pneumatic transport systems. They are suitable for transferring powdered materials. The material enters from the top and exit from side flange and transferred to conveying pipe.

PNEUMATIC DIVERTING GATE

MODEL : PDK



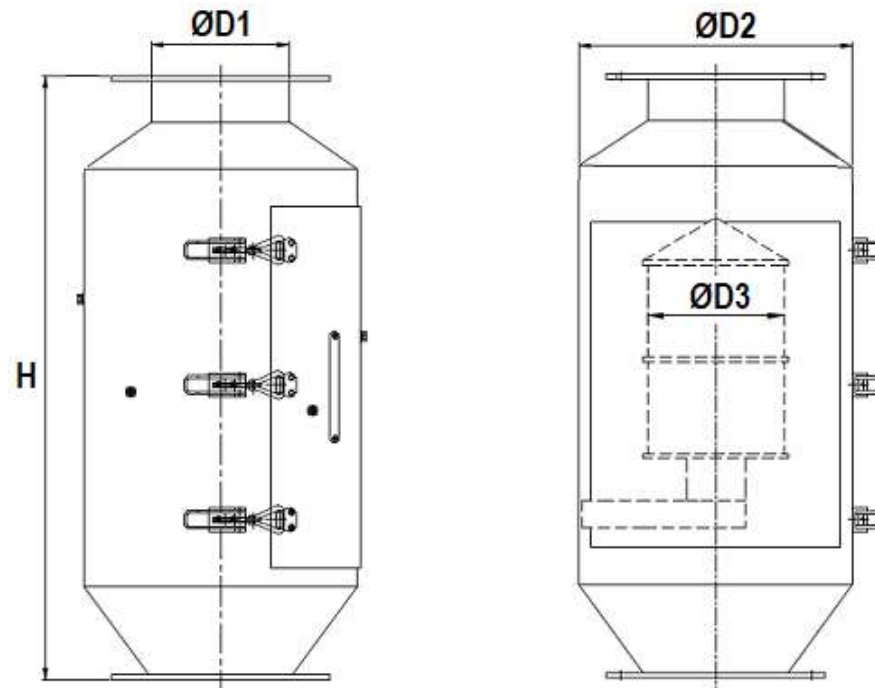
MODEL	PDK 70	PDK 95	PDK 120	PDK 150
ØGi (mm)	46-83	86-102	108-133	139-168
Max. pressure (bar)	6	6	6	6

- 1) Product Inlet 2) Product Outlet 3) Fixation surface 4) Activator 5) Adopter

Specially designed and manufactured valve systems for transferring of final product to different points. The system provides 60 degree rotary motion of chock block via pneumatic actuator inside the aluminum body. In this way, it can be easily achieved that the final product is transferred to two different directions. There are a variety of models available to meet all the demands of users.

MAGNETIC SEPARATOR

MODEL : BM



Magnetic separators are used to eliminate ferrous materials in the grain during the flowing of the material to protect further equipment damages from metal particles.

MODEL	BM 120	BM 150	BM 200	BM 250
Capacity (t/h) Wheat	10	15	40	50
Capacity (t/h) Maize	7	12	30	35
Capacity (t/h) Wheat, maize flour	5	9	20	25
Capacity (t/h) Wheat, maize bran	4	7	10	20
ØD1 (mm)	120	150	200	250
ØD2 (mm)	280	300	300	410
ØD3 (mm)	120	150	200	250
H (mm)	650	650	720	900
Weight (kg)	5	12	23	30

We would be glad to cooperate with you and and thank you very much for your business in advance



Stainless steel, mild steel and galvanized
Spouting & Accessories for mills
Granulated food industry & Pharmaceutical plants

Continuous & Batch Mixer Lines

Milling Machines & Equipment

Cereatech Inc.
7900 Westheimer Road, Houston, TX 77063
Phone : +1 608 960 6427
Email : info@cereatech.com
Linkedin : [cereatech steel works](#)
Web : www.cereatech.com